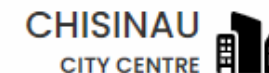
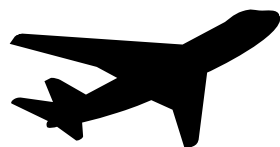


Chisinau AIRPORT



Between the airport and city centre (Great National Assembly Square / Cathedral Park) is a distance of 13 kilometres / 8.1 miles, by car it takes 25 minutes to cover this distance.

Useful apps:



Yandex Go



Hip Car



Letz Taxi



Tranzy

Please note: Payment in taxis is cash only.

Also, if you're paying with cash, please note that only Moldovan lei are accepted.

Currency:

1 EUR = 18.99 MDL, as of april 2024

1 USD = 17.68 MDL, as of april 2024

As of today, you can view the currency exchange rates here:

<https://www.curs.md/en>



Taxi Services

Consider taking a taxi if you prefer a more comfortable ride over public transport. Taxi service is available 24/7, and the office can be found at the airport's Arrival Hall. The usual price from the airport to Chisinau city center is around 10 - 15 euros.



Trolleybus to Chisinau

Here is the timetable of trolleybus service:

<https://rtec.md/for-dubl-plugin-2/>

You can opt for the express Trolleybus 30, which operates from 06:00 to 23:00 hours. In terms of travel time and costs, the price is 6.00 MDL per ticket. Payment on some trolleybuses can be made by card, while others only accept cash. The route map of the trolleybus is displayed at the station.

Let's Walk Together



Public Garden

The Public Garden "Ștefan cel Mare" is the oldest park in a classic style, established in 1835. Additionally, visitors can encounter busts of 28 renowned Moldavian writers and poets along the Alley of the Classics, where free WiFi and charging outlets are also available.



Cathedral Park

Cathedral Park is located right in the heart of the city and is over 180 years old. This place is ideal for relaxation as it is situated amidst an aura of exceptional spirituality. Additionally, there is a free Wi-Fi network available within the park grounds.



Painter's Alley

Painter's Alley is located on the edge of the Cathedral Square, next to the Pedestrian Street "Eugen Doga". Along the alley, 20 concrete supports, each 3 meters wide, have been set up, serving as showcases for painters.



Pedestrian Street

The "Eugen Doga" Pedestrian Street, which mimics the keys of a piano, as a tribute to the great composer. Here, you can also enjoy coffee, food, wine, as there are several establishments located here.

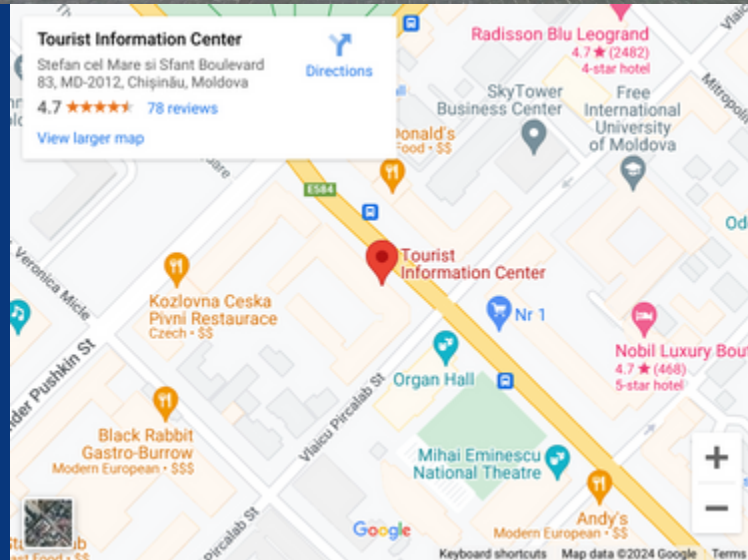


Tourist information center

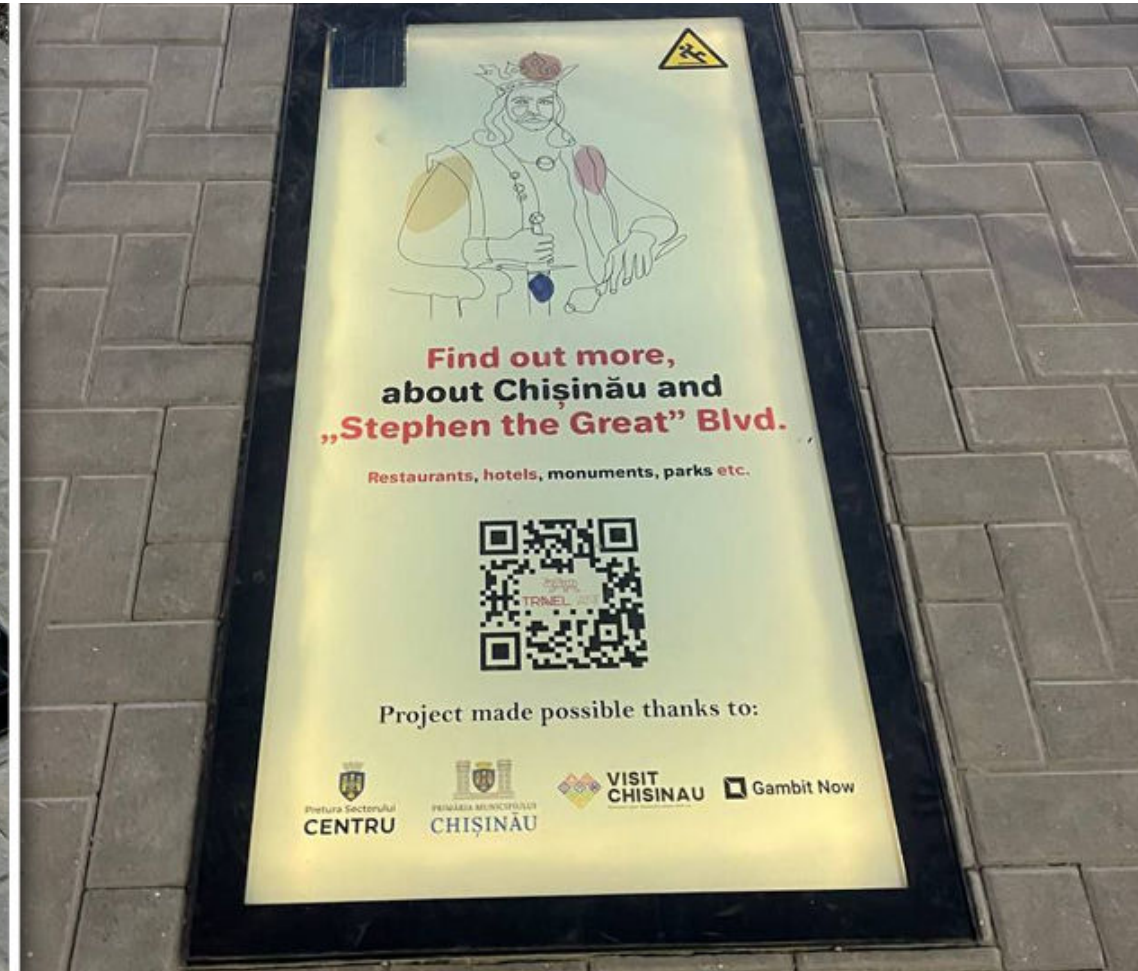
Discover Chişinău by walking



In the city center, you can also see informative signs that help you discover the city more easily. They are located at intersections and on poles alongside traffic sign.



INFORMATION DISPLAY

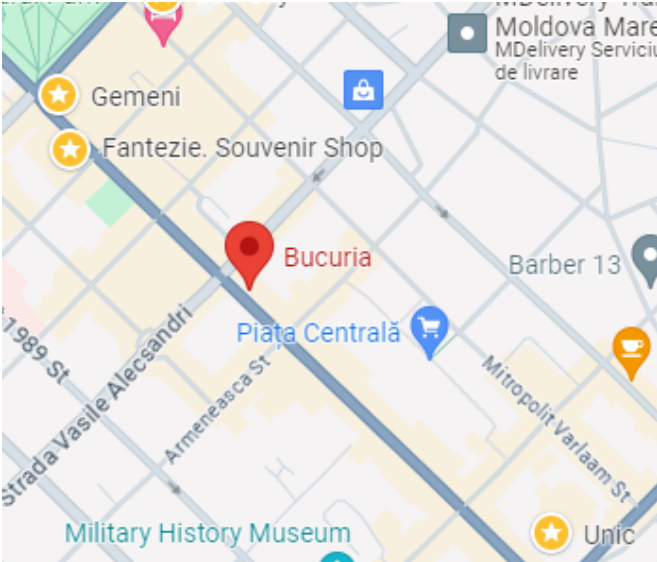


By scanning the QR code, you will be redirected to the digital map (<http://TravelAnt.org>) that displays your current location and all the attractions in the Chisinau area. This interactive platform provides information on all the points of interest in the city, such as hotels, restaurants, cafes, historical and cultural sights, as well as leisure centres and parks.

For the best sweets



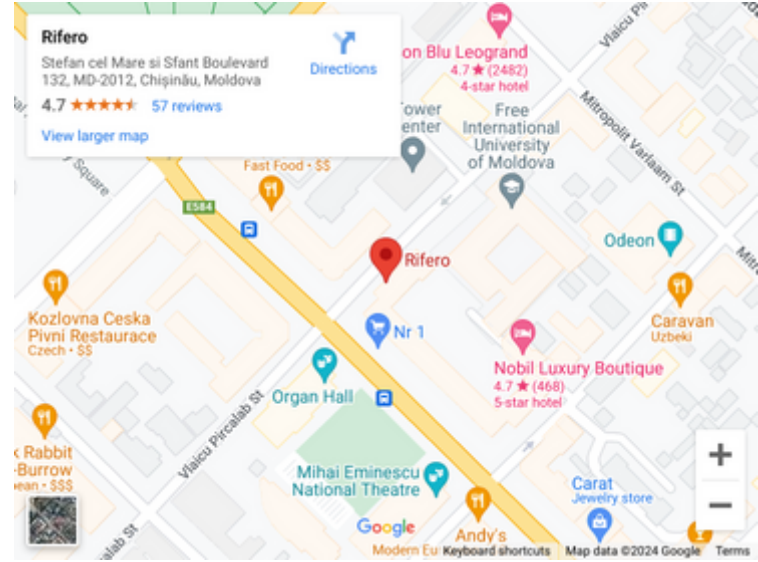
The 'Te Ador' Store



The 'Bucuria' Store



The 'Rifero' Store



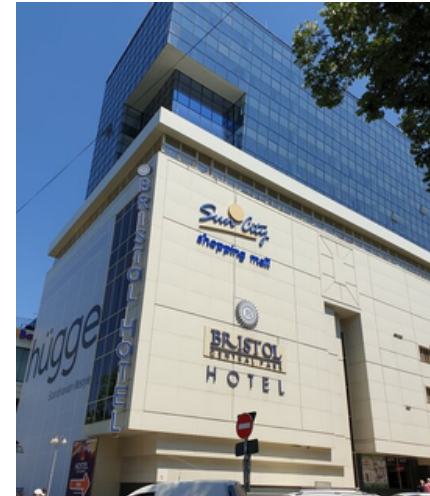
For shopping



GEMENI



Fantezie (Souvenirs)



Sun City



UNIC





The Parliament of the Republic of Moldova



The Government of the Republic of Moldova



The Presidential Palace of the Republic of Moldova



The City Hall building of Chişinău municipality

Things you probably didn't know about the Republic of Moldova:

On the territory of the republic, there are 2 largest functional cellars in the world: Milestii Mici with 200 km of underground labyrinths and Cricova with 120 km.

The underground wine town of Cricova covers an area of 53 hectares. As in a real city, there are traffic lights and road signs, all located at a depth of 35-80 m underground.

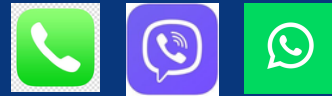
Despite its small size, Moldova boasts diverse flora and fauna, including rare and endangered species. The country has several protected areas, such as Codrii Natural Reserve, which is one of the largest and oldest forests in Europe.

The city of Chişinău is considered the greenest capital in Europe.

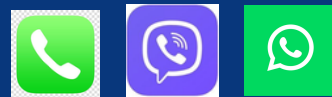


If you have any questions or need assistance, please **CONTACT US:**

Cristina +373 68 19 25 79



Mihaela +373 62 12 31 51



Silvia +373 79 96 54 83

